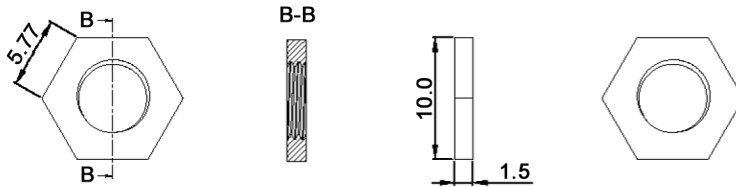


NUT
M6x0.75



Material: neoprene (CR), black, hardness: 60 +/-5 shore A
Nut: brass



Tolerances:			Date	Name	ET 102
0-10mm	+/- 0.10mm	40-50mm	+/- 0.30mm	04/13	
10-20mm	+/- 0.15mm	50-60mm	+/- 0.35mm		
20-30mm	+/- 0.20mm	60 and above	+/- 0.40mm		
30-40mm	+/- 0.25mm				
			knitter-switch		30 28 44
Modifications			Date	Name	Page
					1/1